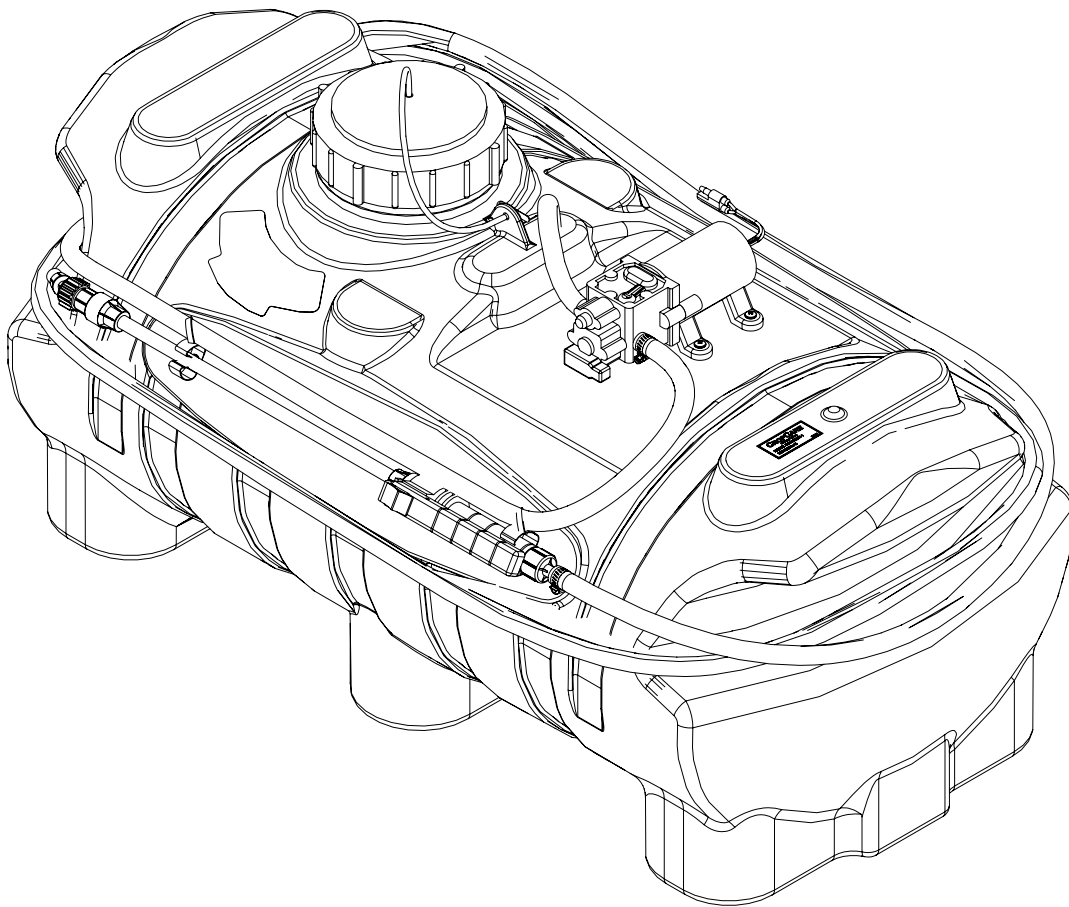




# Owner's Manual

## 25 Gallon Spot Sprayer Model LGX25-1



Manufactured by PBZ LLC  
A Paul B Zimmerman Inc. Company  
[www.CropCareEquipment.com](http://www.CropCareEquipment.com)

Form: LGX25-10M  
Rev. B Date: 9/21



# Table Of Contents

Specifications.....	3	Routine Maintenance.....	10
Introduction .....	4	Winterizing your Sprayer .....	10
Safety .....	4	Troubleshooting .....	11
Signal Words.....	4	Breakdowns & Parts Lists .....	12
General Guidelines.....	5	Breakdown .....	12
Before Operation .....	6	Parts List.....	13
During Operation .....	6	Pump Breakdown .....	14
Following Operation .....	6	Pump Parts List.....	14
Pump Safety Precautions.....	6	CropCare® Limited Warranty.....	15
Installation .....	7	Ordering Parts .....	15
Base Unit.....	7		
Wiring Harness .....	8		
Operating Instructions .....	9		
Before and During Operation .....	9		
Following Operation .....	9		
Maintenance Instructions .....	10		

## Identification of Machine

- Model #'s: LGX25-1
- The model number and revision identification decal is located on top of the tank .

## Specifications

25 gallon Spot Sprayer  
Model #'s: LGX25-1

Tank capacity ..... 25 gal  
Min power supply ..... 12 volt / 4.5 amp  
Wiring harness length ..... 8'

Pump:  
Type .....Diaphragm pump  
Manufacturer .....Remco®  
Max pressure ..... 100 psi  
Open flow rate..... 1.6 gpm

Sprayer:  
Hose length ..... 15'

Weight:  
Shipping weight .....28 lbs

# Introduction

Please read and understand this manual and its instructions and warnings completely before operating the sprayer.

- Familiarize yourself and other operators with the sprayer's components and how all parts are operated.
- Read and understand the chemical manufacturer's labels, warnings, and instructions.
- Know and fulfill all state pesticide applicator license requirements.
- Contact your authorized CropCare® Dealer for help interpreting the owners manual.
- Read and follow ALL of the chemical manufacturer's labels, warnings, and instructions about chemical usage! A material safety data sheet (MSDS) should be provided by the chemical manufacturer. CropCare® is not liable for misuse or mishandling of chemicals before spraying, during spraying, and after spraying.

## Safety

### Safety Alert Symbol

-The safety alert symbol for safety signs & decals that contain one of the three signal words (DANGER, WARNING, & CAUTION) will appear as shown in figure 1.



Figure 1: Safety Alert Symbol

---

### Signal Words

-There are three signal words; DANGER, WARNING, and CAUTION. The signal words bring attention to the existence and relative seriousness of a hazard.

- **DANGER:** The signal word DANGER indicates an imminently hazardous situation which, if not avoided, will result in death or serious injury
- **WARNING:** The signal word WARNING indicates a potentially hazardous situation which, if not avoided, could result in death or serious injury.
- **CAUTION:** The signal word CAUTION indicates a potentially hazardous situation which, if not avoided, may result in minor or moderate injury.

## Signal Words

-Additional Signal Words.

- NOTE: The signal word NOTE provides information on operator safety and operator tips.
- IMPORTANT: The signal word IMPORTANT indicates a recommended action or a restriction that will ensure correct equipment operation and performance.



## General Guidelines

Every year many unnecessary accidents occur due to improper equipment handling and a disregard for safety precautions. You, the operator, can avoid accidents by observing the precautions listed in this section.

- The operator should be a responsible adult. Do not allow persons to operate this sprayer until they have displayed a thorough understanding of sprayer safety precautions and operational use!
- All operators must also fulfill state pesticide applicator license requirements!
- Never attempt to operate this sprayer when under the influence of alcohol or drugs.
- The best defense against accidents is a careful and responsible operator.
- A chemical warning decal and an owner's manual warning decal are located on the sprayer's tank. (Figure 1). Be aware of their location. Always replace any warning or safety decals that are not legible or are missing.
- When transporting the sprayer on public roads, always follow state and local regulations regarding safety and transportation requirements. Use the necessary lights and slow moving vehicle (SMV) emblems.
- If there is any portion of this manual that you do not fully understand, please contact the original retailer.



Figure 1: Chemical Warning / Read Owner's Manual Decal

# Safety Precautions



## Before Operation

- Carefully study and understand this owner's manual.
- Read and follow chemical manufacturer's labels, warnings, and instructions! A material safety data sheet (MSDS) should be provided by the chemical manufacturer.
- To avoid injury from chemical hazards, wear the proper protective clothing. Each chemical manufacturer's clothing requirements are listed under the "Personal Protective Equipment (PPE) section in the chemical instructions.
- Do not wear loose-fitting clothing which may catch in moving parts.
- Never exceed the load rating for the piece of equipment the sprayer is mounted on.
- Give the sprayer a visual inspection for any worn parts, loose bolts, or other visible problems, and make the necessary repairs. See the "Maintenance Instruction" section.
- Make sure the area is clear of any people or obstructions before using the sprayer.
- Have all operators practice operating the sprayer and its attachments, using clean water only, until all persons are completely capable of safe operation.



## During Operation

- Always be aware of bystanders, particularly children!
- No passengers are allowed on or in the equipment the sprayer is mounted on.
- Keep hands and body parts clear of all moving parts.
- Never leave running equipment unattended!
- Allow for sprayer boom length when making turns.
- Be aware of dangerous terrain such as holes, slopes, drop-offs, banks, rocks, and hidden hazards.
- Operate the equipment and sprayer up and down slopes, not across.
- Remember that accidents can even happen to seasoned operators. Always take your time and follow all safety instructions.



## Following Operation

- Following operation, stop the equipment, set brakes, shut off engine, and remove ignition key.
- Park the sprayer on a hard level surface
- Do not permit children to play on or around sprayer.
- Store the sprayer away from human and livestock activity.



## Pump Safety Precautions

- **IMPORTANT:** Never pump flammable or explosive fluids such as gasoline, fuel oil, kerosene, etc.
- **NOTE:** The pump may be run dry for limited periods of time without resulting in damage.
- Always disconnect the power to the pump when working on the pump. Failure to do this could result in electrical shock.

# Installation

The Spot Sprayer is designed to be mounted on the rack of an ATV, on a garden trailer, or any other utility vehicle. Mounting the sprayer correctly and securely will ensure consistent and safe spraying.

## Base Unit

1. Before installing your sprayer, make sure that the sprayer unit does not exceed the equipment manufacturer's load rating. The sprayer unit could weigh up to 210 lbs when filled with 25 gallons of water.
2. The chosen mounting location should also be easily accessible for filling the sprayer's tank (Figure 3).
3. For some temporary situations it may be more convenient to strap the sprayer to your equipment (a) with heavy-duty straps (b) (Figure 4). If you choose to strap the sprayer down ensure that it is fastened securely.
4. For optimal stability, mount the Spot Sprayer with bolts using the holes in the bottom of the sprayer (Figure 5). It is recommended that you measure the distance between the bottom mounting holes because tank measurements can vary up to 1/8" (Figure 5).

**NOTE:** If you are permanently mounting the sprayer in an outdoors location, it is important that you cover the pump to protect it from the elements.

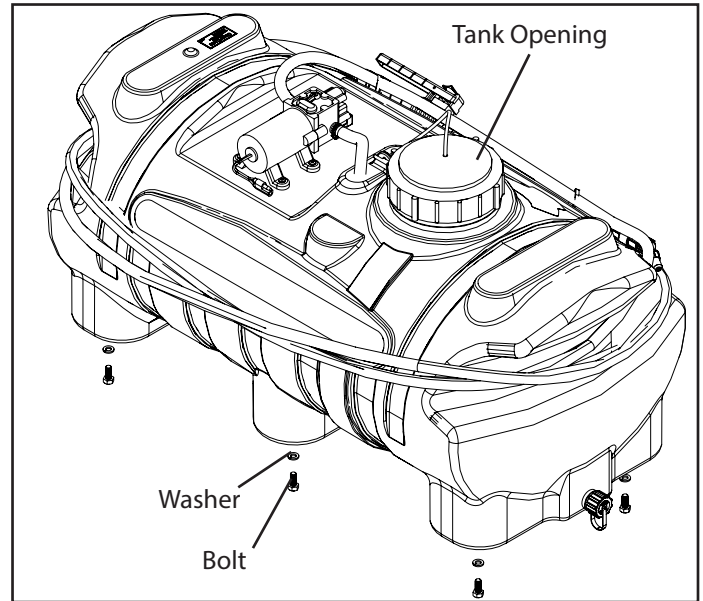


Figure 3: Mounting the sprayer with bolts

**NOTE:** Do not tighten bolts past 1/2" in the holes in the bottom of the sprayer.

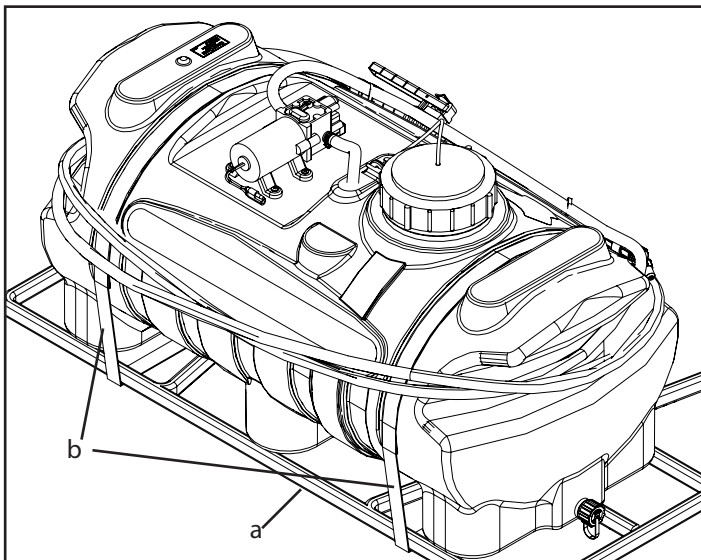


Figure 4: Mounting the sprayer with straps

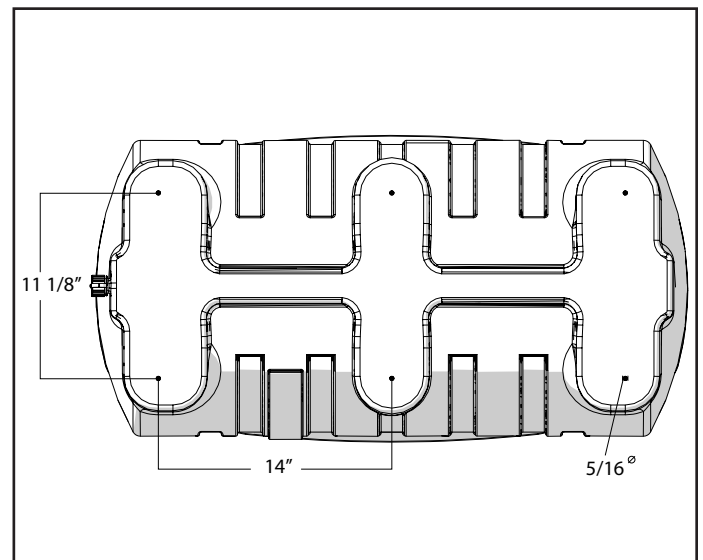


Figure 5: Bottom hole dimensions

# Mounting the Sprayer

## Wiring Harness

1. The pump wiring harness (a) has a 2-pronged plug. This wiring harness needs to be connected to the switch wiring harness (b) which includes the control switch. Make sure the wire colors match (Figure 5).
2. The switch wiring harness (b) needs to be connected to the battery wire harness (c) which includes the 15 amp fuse (d). Make sure the wire colors match (Figure 5).
3. The battery wire harness needs to be connected to a 12 volt DC power source. Connect the red wire to a positive power source either to the vehicle's battery terminal or at a power access point with at least 10 amp capability. The black wire needs to be connected to a good ground source or to the negative terminal of the battery.

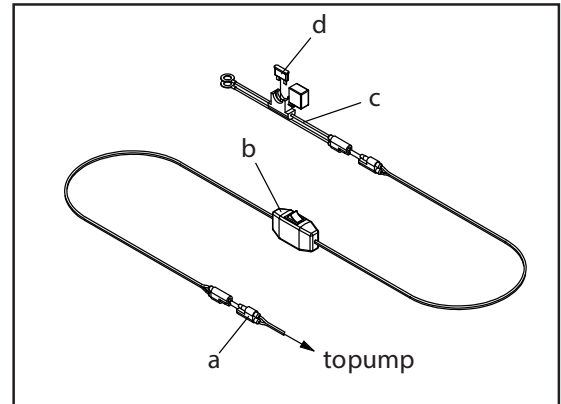


Figure 5: Wiring Harness

NOTE: The end of the wiring harness with the ring terminals (d) is detachable and can be left attached to the battery for convenience purposes.

4. Ensure that the power source is adequate, since an inadequate power source could cause numerous problems with your sprayer. If you are using a power access point, ensure that it has at least 10 amp capability.
5. You now need to place the switch in a location where it is easily accessible for operation. Secure it so that it cannot fall or become entangled and cause damage.

NOTE: The end of the wiring harness with the ring terminals (d) is detachable and can be left attached to the battery for convenience purposes.

# Operating Instructions

Before operating the sprayer, it is important that you read this entire manual and know all safety precautions. Always take your time and be alert when operating the sprayer in order to avoid an accident.

## Before and During Operation

1. Before operation it is important to give the sprayer unit a thorough inspection, which covers the hoses, wiring harness, and other sprayer components. Ensure that the suction strainer and the tank are rinsed out.
2. Before using any chemical or product ensure that it is not a petroleum-based product or a non-compatible chemical for the pump.
3. Fill the sprayer tank with the proper amount of water and chemicals as instructed by the chemical manufacturer.
4. Connect the wiring harness to an approved power source as directed in the "Mounting the Sprayer" section (Page 8). Turn the control switch (b) (Figure 5, Page 8) to the ON position and allow the pump to run until it reaches its maximum pressure. The pump will automatically turn off when its maximum pressure is reached. The pump does not need to be manually turned off with the control switch.
5. When you are ready to spray, point the gun in the desired direction and squeeze the trigger on the spray gun. The pump will automatically start when the spray gun is engaged.
6. The spray gun's liquid flow can be adjusted by turning the spray tip (a) at the end of the spray gun wand. The spray gun's trigger can also be locked in the "on" position by sliding the plastic tab (b) on the top of the trigger towards yourself (Figure 6).

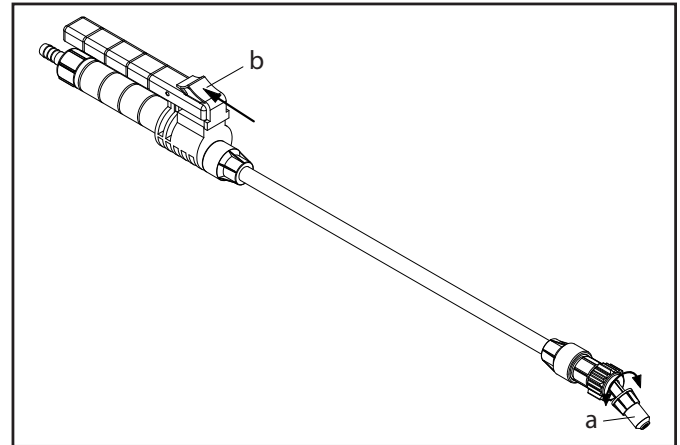


Figure 6: Spray gun

**IMPORTANT:** Using a petroleum-based product or a non-compatible chemical will void the manufacturer's warranty. Contact the original retailer if you are unsure as to whether or not a chemical or substance is acceptable for the pump.

## Following Operation

1. **IMPORTANT:** Thoroughly rinse the sprayer of any chemical residue after spraying. It is recommended to fill the tank with fresh water and engage the spray gun until the system is entirely free of chemical residue. **WARNING:** Do not to rinse the sprayer in an area where humans, animals, or sensitive plants could come in contact with chemical residue.
2. Store the sprayer in a location where it will be away from human or animal activity. Do not allow children to play on or near the sprayer.

# Maintenance Instructions

## Routine Maintenance

It is very important to perform routine maintenance on your sprayer before and after each use. Good maintenance practices will help to guard against any unnecessary sprayer breakdowns or accidents.

1. It is recommended to perform a visual and physical inspection for any worn parts, loose bolts, or other visible problems. Make all necessary repairs before spraying. Contact the original retailer for instructions on ordering parts and for technical help.
2. The suction strainer (ref # 1, page 12) is located on the end of suction hose (inside the tank) and should be inspected and rinsed off on a regular basis.
3. After each use it is important to rinse the pump and all components by running water through the system. Fill the tank with a sufficient amount of fresh water and engage the spray gun. Rinsing the pump with fresh water will greatly improve the life of the pump.
4. Always follow all pump safety precautions and warnings (Pages 4-5). Following these guidelines will help to ensure many years of smooth and trouble-free spraying.

## Winterizing your Sprayer

It is essential that you winterize your sprayer to avoid damage and to allow for optimal performance. The winterization process should be undertaken before freezing conditions and/or after each season of use. Failure to winterize your sprayer will void the manufacturer's warranty.

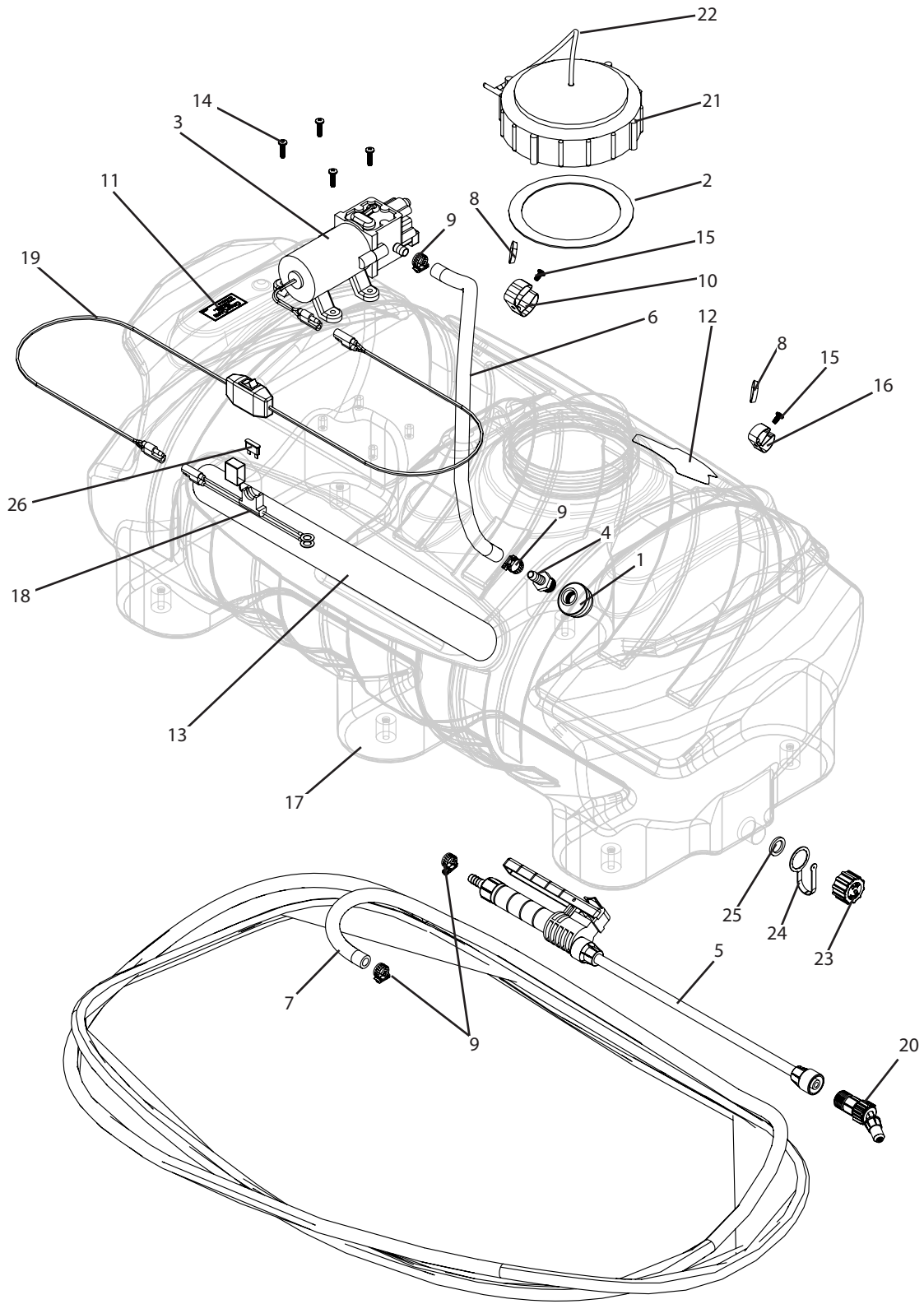
1. Verify that the tank is rinsed out and empty. Pour a 1/2 gallon of RV nontoxic antifreeze into the tank. **WARNING:** Do not use standard automotive antifreeze (ethylene glycol) as it can be harmful to humans, animals, crops, and the environment.
2. Engage the pump and spray with the spray gun for several minutes. Make sure that the antifreeze has been pumped through the entire system.
3. Store the sprayer in a dry location away from the elements.
4. Before spraying in the spring it is recommended to flush the sprayer with fresh water to cleanse it of the antifreeze and any other buildup. It would also be beneficial to do a thorough inspection of all sprayer components before spraying.

# Troubleshooting

As you use your Spot Sprayer, it is possible that you will encounter minor problems that can be easily fixed. The following problems and respective causes and solutions should cover most of the potential problems that you may face. If you are having problems please attempt to use this troubleshooting section to solve the problem. If you are unable to fix the problem please contact the original retailer for service.

Problems/Symptoms	Possible Causes	Solutions
Low Rate of Flow	Suction Strainer is partially clogged	Remove the suction strainer and rinse
	Pump valves are damaged/bad	Replace the valves or contact the original retailer for service and/or repairs
	Low voltage	Use a power source rated at 10 amps and 12 volts
Pump Will Not Prime	Suction line is clogged	Inspect the suction line for debris
	Suction strainer is clogged	Remove the suction strainer and rinse
	Pump is damaged from chemicals not being properly rinsed out	Contact the original retailer for service and/or pump repairs
Pump Will Not Run	Fuse is blown	Replace the fuse on the wiring harness
	Incorrect voltage	Use a power source rated at 10 amps and 12 volts
	Pump pressure switch is malfunctioning	Replace the pressure switch or contact the original retailer for repairs
No Spray Flow	Spray tip is clogged	Remove the spray tip and rinse out
	Suction strainer is clogged	Remove the suction strainer and rinse

## Breakdown



# Breakdowns & Parts Lists

## Parts List

Ref #	Qty.	Part Number	Description
1	1	10416D	Strainer, Suction 3/8" FPT 40 Mesh
2	1	11042	Gasket, EPDM for 5" Lid
3	1	2452-111-10B *	1.6GPM Demand Pump 100 PSI VITON Valves, SANTOPRENE Diaphragms, 3/8" HB 12VDC
4	1	3A3838	Adapter, Hose 3/8" MPT x 3/8" HB
5	1	5080015PP406	Spray Gun, TriggerJet 15" Poly Ext 3/8" HB Inlet X18 Tip
6	1.67'	6106	Hose, Clear Vinyl Reinforced 3/8" 315 PSI
7	17'	6106	Hose, Clear Vinyl Reinforced 3/8" 315 PSI
8	2	618UV	Cable Tie, 6" 18 Lb UV Black
9	4	62604052	Hose Clamp, Mini 1/4" - 5/8"
10	1	C13201	Clip, Medium Grip
11	1	DE185	Decal, LGX25-1 Model and Revision
12	1	DE210	Decal, MSDS Warning and Read Owner's Manual
13	1	DE211	Decal, LGX25
14	4	MR1024*58	Screw, Machine Rd Hd 10-24 x 5/8" Combo Drive
15	2	MR1024*38S	Screw, Machine Rd Hd 10-24 x 3/8" SS
16	1	N189472	Clip, Gripper 3/8" - 5/8" Zinc
17	1	T1435	Tank, 25 Gallon Yellow Poly w/Lid Lanyard Outlet Cap Gasket and Tether
18	1	SPT-BCG-1215A-16G	Harness, Battery Connector 14G w/15A Fuse
19	1	SPT-SWH-9615A-16G	Harness, Wiring 8 Ft 14G w/ Switch
20	1	38720PPBX18 **	Adjustable spray nozzle, #18
21	1	60323 ***	Tank Lid
22	1	10873 ***	Lanyard, 12" long
23	1	19024 ***	Tank outlet cap for Den Hartog Applicator Tank
24	1	19025 ***	Tank outlet cap tether for Den Hartog Applicator Tank
25	1	10960 ***	Tank outlet cap gasket for Den Hartog Applicator Tank
26	1	ATC-15	Fuse, 15 Amp Buss

\* Pump breakdown is listed on page 14

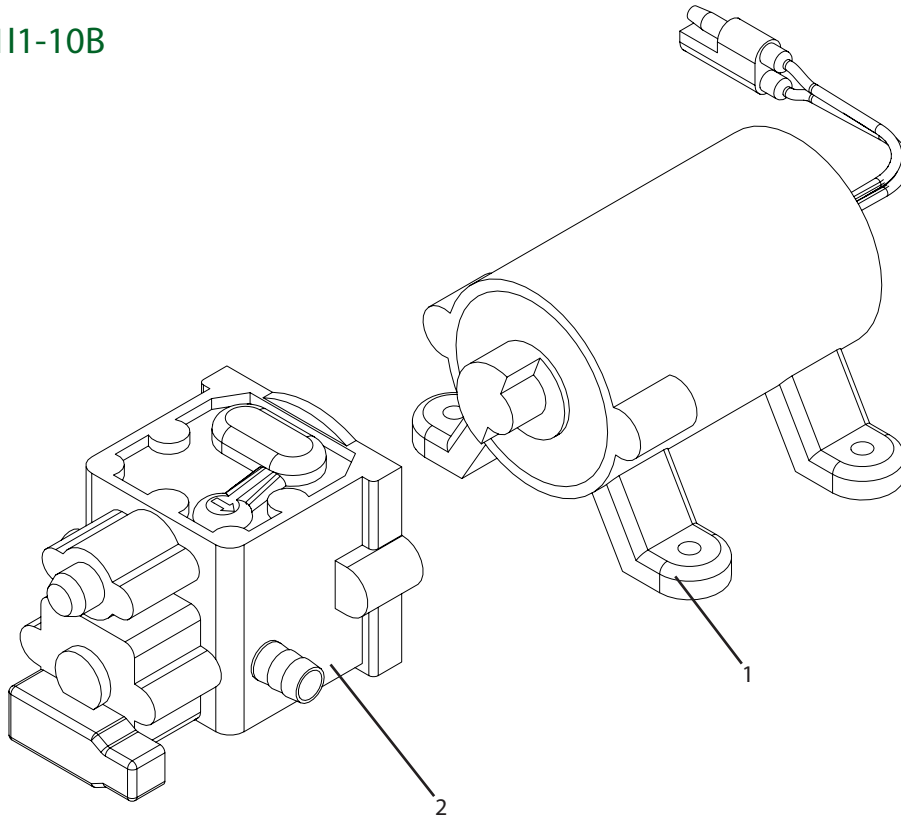
\*\* Individual part is included with the spray gun (Item 5)

\*\*\* Included with tank part number (Item 17)

# Breakdowns & Parts Lists

## Pump Breakdown

Model: 2452-111-10B



## Pump Parts List

Ref#	Qty.	Part Number	Description
1	1	M242-S	Motor, 2-pin Connector
2	1	PH-2400D	Pump Head and Switch Assembly, 2400 Series

# CropCare® Limited Warranty

Spot Sprayer: Model LGX25-1

## Warranty Coverage

CropCare® hereby provides a Limited Three (3) Year Warranty on Spot Sprayers, manufactured by CropCare®. Spot Sprayers manufactured by CropCare® are warranted against any manufacturer's defects in any of the sprayer's components in the 36 months following the original date of purchase.

Defective components will be repaired or replaced at the discretion of the manufacturer. It is the responsibility of the purchaser to return warranted components to the manufacturer. This warranty is limited to the repair or replacement of sprayer components only. CropCare® is not to be held liable for incidental or consequential damages of any kind. This warranty covers the purchaser of this Spot Sprayer and any other owners who own it during the warranty period.

To retain the warranty, the sprayer must be operated and maintained as ascribed by its owner's manual. For warranty service, please have a copy of the purchase invoice available.

## Warranty Is Void if:

1. The sprayer has been subjected to, in the opinion of CropCare®, negligent handling, misuse, an accident or if the instructions in the owner's manual were not completely followed.
2. The sprayer's components have been altered in any manner or repairs have taken place with unapproved parts.
3. The sprayer and its components were subject to freezing or freezing conditions. The sprayer must have been winterized as per the maintenance instructions to retain the warranty.
4. A non-compatible chemical was used and/or if the sprayer operator failed to rinse all chemical residue out of the sprayer's components after use.
5. A petroleum-based, oil-based, or flammable product was used and caused damage to the pump, tank, hoses, or any other component.

## Getting Warranty Service

All warranty claims must be made through the original retailer. All warranty claims must be submitted with an invoice or a proof of purchase that denotes the purchase date and place of purchase. If you have any questions or comments concerning this warranty, please contact the original retailer.

## Ordering Parts

Please contact the original retailer to order replacement parts for your product.

# ***CROPCARE***

---

by PBZ<sup>®</sup>

Manufactured by PBZ LLC  
A Paul B Zimmerman Inc. Company  
[www.CropCareEquipment.com](http://www.CropCareEquipment.com)